

Parisian Thoroughfare

Transcribed by Tarek Yamani

Bud Powell

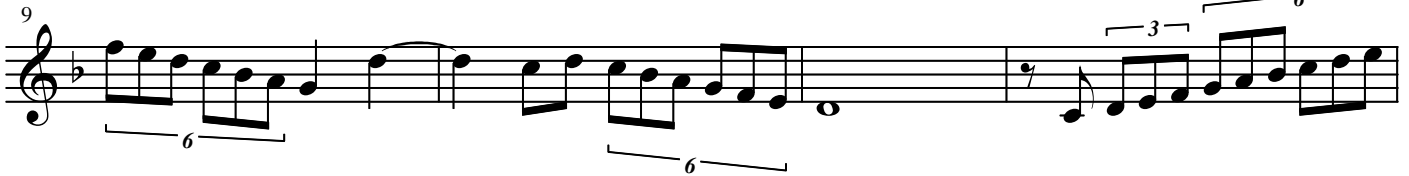
FM7 G-7 A-7 B^bM7 A-7 G-7 FM7



FM7 G-7 A-7 B^bM7 A-7 G-7 FM7



FM7 G-7 A-7 B^bM7 Am7 G-7 C7



FM7 G-7 A-7 B^bM7 F/C G-7 C7 E7



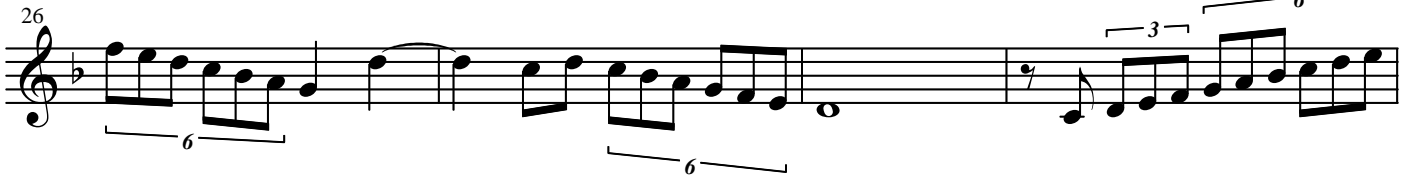
AM7 B-7 E7 AM7 B-7 E7



CM7 D-7 G7 G-7 C7



FM7 G-7 A-7 B^bM7 A-7 G-7 C7



30 FM7 G-7 A-7 B♭M7 F/C C7

34 F D- C7 F D- G- C7

38 F G-7 C7 F D- G-7 C7

42 F G-7 C7 F D7 G-7 C7

46 F F7/A B♭ B° G-7 C7 F B-7 E7

50 AM7 B- E7 AM7 B-7 E7

54 CM7 D- G7 C G- C7

58 F G-7 G#° E7 A∅ D7 G- C7

Detailed description: This is a guitar sheet music page for a piece in the key of B-flat major. It consists of eight staves of music, each with a measure number (30, 34, 38, 42, 46, 50, 54, 58) and a set of chords. The chords are: FM7, G-7, A-7, B♭M7, F/C, C7, F, D-, C7, F, D-, G-, C7, F, G-7, C7, F, D7, G-7, C7, F, F7/A, B♭, B°, G-7, C7, F, B-7, E7, AM7, B-, E7, AM7, B-7, E7, CM7, D-, G7, C, G-, C7, F, G-7, G#°, E7, A∅, D7, G-, C7. Fingerings are indicated with numbers 1-4 and 6, and slurs with the number 3. The music is written in a single treble clef with a key signature of two flats.

62 F F7 B \flat B $^\circ$ C7 $\overset{\text{3}}{\curvearrowright}$

66 F C7 G- C7 $\overset{\text{3}}{\curvearrowright}$

70 F G- C7 F $\overset{\text{3}}{\curvearrowright}$ $\overset{\text{3}}{\curvearrowright}$

74 F G- C7 F G- C7 $\overset{\text{3}}{\curvearrowright}$

78 F7 B \flat B $^\circ$ F B- E7

82 AM7 B- E7 AM7 B- E7 $\overset{\text{3}}{\curvearrowright}$

86 C D- G7 C C7 $\overset{\text{3}}{\curvearrowright}$

90 F G- C7 F D7 G-7 C7

94 F7 B \flat B $^\circ$ F/C C7

98 F G- C7 F D7 G-7 C7

102 F F7 Bb B° F C7

106 F C7 F C7

110 F F7 Bb B° F E7

114 AM7 E7 AM7 B- E7

118 C D- G7 C7 C7

122 F G- C7 F G- C7

126 F7 F/C D7 G∅ C7

130 F G-7 C7 F G- C7

